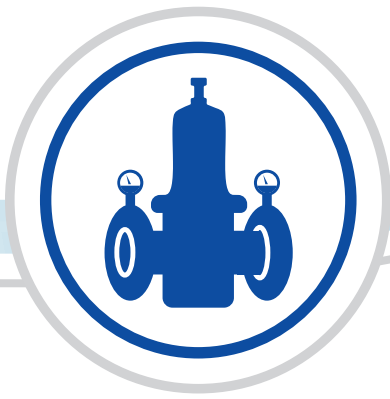




Berluto® Armaturen-Gesellschaft mbH
Rhineland Valve Factory

100 Jahre
1920-2020
made in germany

Cartridge sets for stainless steel pressure reducers



Easy Maintenance

The removable cartridge allows the quick and easy maintenance of our stainless steel pressure reducers in nominal sizes DN 15 to DN 50. We recommend a regular maintenance and will be pleased to advise you. Just select the required cartridge set from the following overview.

| nominal size | 15 | 20 | 25 | 32 | 40 | 50 | 15 | 20 | 25 | 32 | 40 | 50 |
|--------------|------|------|----|--------|--------|----|------|------|----|--------|--------|----|
| G | 1/2" | 3/4" | 1" | 1 1/4" | 1 1/2" | 2" | 1/2" | 3/4" | 1" | 1 1/4" | 1 1/2" | 2" |

FKM

EPDM

| | | | | | | |
|---------|--------------|--------------|--------------|--------------|--------------|--------------|
| DRV 702 | 097002-0003K | 097004-0003K | 097006-0003K | 097002-0008K | 097004-0008K | 097006-0008K |
| DRV 708 | | | | | | |
| DRV 802 | | | | | | |
| DRV 808 | | | | | | |
| DRV 703 | -- | -- | -- | 097902-0008K | 097904-0008K | -- |
| DRV 803 | | | | | | |
| DRV 724 | 097202-0003K | 097204-0003K | 097206-0003K | -- | -- | -- |
| DRV 725 | | | | | | |
| DRV 824 | | | | | | |
| DRV 825 | | | | | | |
| DRV 750 | 097402-0003K | 097404-0003K | 097406-0003K | 097402-0008K | 097404-0008K | 097406-0008K |
| DRV 850 | | | | | | |
| DRV 772 | 097502-0003K | 097504-0003K | 097506-0003K | 097502-0008K | 097504-0008K | 097506-0008K |
| DRV 778 | | | | | | |
| DRV 872 | | | | | | |
| DRV 878 | | | | | | |

pressure reducers for steam applications

| nominal size | 15 A | 20 A | 25 A | 32 A | 40 A | 50 A | 15 B | 20 B | 25 B | 32 B | 40 B | 50 B |
|--------------|--------|--------|------|----------|----------|------|--------|--------|------|----------|----------|------|
| G | 1/2" A | 3/4" A | 1" A | 1 1/4" A | 1 1/2" A | 2" A | 1/2" B | 3/4" B | 1" B | 1 1/4" B | 1 1/2" B | 2" B |

steam applications up to 150°C (PTFE/ EPDM)

steam applications up to 200°C (PTFE/ EPDM/ FEPM)

| | | | | | | |
|-----------|--------------|--------------|--------------|--------------|--------------|--------------|
| DRV 730 D | 097802-000AK | 097804-000AK | 097806-000AK | 097802-000BK | 097804-000BK | 097806-000BK |
| DRV 830 D | | | | | | |
| DRV 732 D | 097702-000AK | 097704-000AK | 097706-000AK | 097702-000BK | 097704-000BK | 097706-000BK |
| DRV 738 D | | | | | | |
| DRV 832 D | | | | | | |
| DRV 838 D | | | | | | |

High-quality seals

In our cartridges we only used high-quality seals made of FKM/ EPDM or FEPM (Aflas)/ EPDM and PTFE for all steam applications.

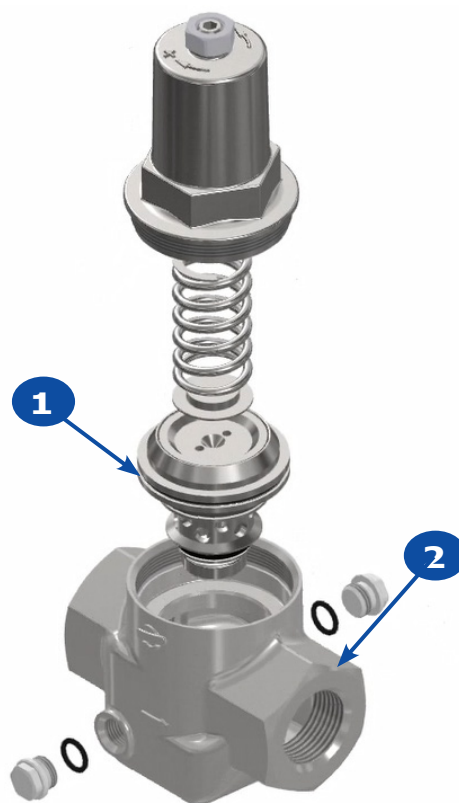
The cartridge is the control element of our pressure reducers, it ensures tightness and functionality of our valves.

Maintenance of a built-in valve

The replacement of the cartridge can easily be made with the built-in valve.

For detailed information just contact us.

Exploded view - pressure reducing valve with cartridge



1 | **cartridge**
Control element of our pressure reducers.

2 | **built-in valve**
Quick maintenance while the valve is still built-in

Berluto® Armaturen-Gesellschaft mbH

Tempelsweg 16 • D-47918 Tönisvorst • Germany

Phone: +49 - (0)2151 - 7038-0

Fax: +49 - (0)2151 - 7007 63

eMail: verkauf@berluto.de

www.berluto.com

© 2021 Berluto Armaturen-Gesellschaft mbH