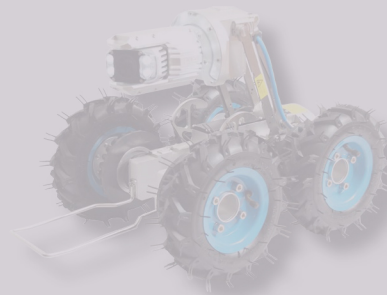


## Video Inspection Systems for Pipes & Wells Catalogue 2019



- Push-rod Cameras
- Manhole Camera
- Robotic Inspection systems
- Vertical Camera
- Well Cameras
- Pipe Detectors



FORBEST Europe GmbH  
Bannwaldallee 46, 76185 Karlsruhe, Germany  
Tel.: + 49 (0) 721 9649 6810  
Email: [info@forbest-online.com](mailto:info@forbest-online.com) Site: [www.forbest-online.com](http://www.forbest-online.com)



## OUR STRENGTH

### 30 Years of Expertise

Manufacturer of inspection equipment since 30 years, FORBEST has gained its reputation as a reliable partner thanks to its products of high quality, competitive prices as well as quick and humane after-sales services. Each year, more than 10 000 cameras FORBEST are sold throughout the world.

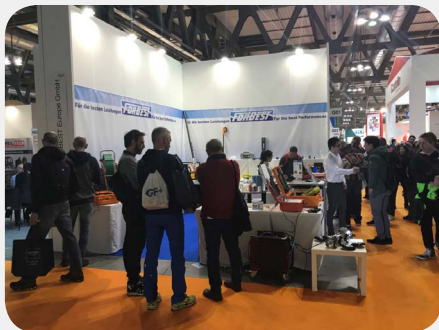
### Strong Innovation and Evolution Capacities

FORBEST follows with attention the evolution of our customers' needs. Thanks to its R&D team and factory, FORBEST innovates constantly its products while being endowed with a strong capacity to respond to its customers' specific demands. FORBEST works with a dozen of brands in the world under OEM or ODM partnerships.

### Rapid and Humane After-Sales Services

FORBEST Europe as well as its distributors in Europe take care of maintenance and repairs of FORBEST products in case of needs. We endeavour to guarantee your equipment is repaired or maintained in a short delay under humane conditions.

## INTERNATIONAL



Model:

**ELEGAM  
10**

## Pipe Inspection System Portable Push-rod Camera

- DN50 to DN125 pipes, 40 m cable
- Intelligent design: easy to carry around and operate
- Axial camera, meter counting; 512 Hz transmitter in option



C25



C25T

### Packing List

**Accessories:** 1 × DVR remote control, 1 × charger/AC adaptor, 1 × connecting cable, 1 × centralizer, 1 × EVA camera protection, 1 × built-in Li-Ion battery, 1 × notice

**Weight & dimensions:** 9 kg, 33 × 30 × 29 cm

### Order codes

Codes	Specifications
PIC31X-C25-40MC (standard)	Without 512 Hz transmitter
PIC31X-C25T-40MC (in option)	512 Hz transmitter integrated

### Parameters



Camera Head

Models: C25, C25T and other models in option (Refer to Appendix 1)

Diameter range of service: DN50 - DN125

Dimensions:  $\Phi$  25 × 27 mm

Passage of elbows: C25  $\geq$  35 mm, C25T  $\geq$  65 mm

512 Hz transmitter in option

Materials: housing in stainless steel, lens in sapphire crystal

Focal length: 10 to 20 cm, fixed

Resolution: 0.4 mega-pixel

Lighting: 12 LEDs

Waterproof: IP68, 1 bar Max.

Operating temperature: -20°C to 55°



Cable Reel

Cable: fibre glass, 40 m long

Power supply: by the control station

Built-in meter counting

Operational temperature: -28°C to 50°C

Protection rating: splash-proof

Screen: 7" TFT 800 × 480 pixel resolution

Autonomy:  $\geq$  4 h

Power supply: 220 VAC / rechargeable Li-ion battery

Photo/video formats: JPEG / AVI

Storage onto USB / SD

Operational temperature: -28°C to 50°C

Case: ABS, splash-proof



Control Station

Model:

**ELEGAM  
20**

## Pipe Inspection System Portable Push-rod Camera

- DN50 to DN125 pipes, 60 m cable
- Intelligent design: easy to carry around and operate
- Axial camera, built-in self-leveling and meter counting functions; 512 Hz transmitter in option
- Keyboard integrated for text input



C26



C26T

### Packing List

**Accessories:** 1 × DVR remote control, 1 × charger/AC adaptor, 1 × connecting cable, 1 × centralizer, 1 × EVA camera protection, 1 × built-in Li-Ion battery, 1 × notice

**Weight & dimensions:** 16 kg, 51x44x50 cm

### Order codes

Codes	Specifications
PIC41X-C26-60MC (standard)	Without 512 Hz transmitter
PIC41X-C26T-60MC (in option)	512 Hz transmitter integrated

### Parameters



Camera Head

Model: C26 (Without transmitter), C26T (With transmitter), and other models in option (Refer to Appendix 1)

Diameter range of service: DN50 - DN125

Dimensions:  $\Phi$  26 × 64 mm

Passage of elbows:  $\geq$  65 mm

Built-in self-leveling function

512 Hz transmitter in option

Materials: housing in stainless steel, lens in sapphire crystal

Focal length: 10 to 20 cm, fixed

Resolution: 0.5 mega-pixel

Lighting: 15 LEDs

Waterproof: IP68, 1 bar Max.

Operational temperature: -20°C to 55°C



Cable Reel

Cable: fibre glass, 60 m long

Power supply: by the control station

Built-in meter counting

Operational temperature: -28°C to 50°C

Protection rating: splash-proof

Screen: 10" TFT, 800 × 480 pixel resolution

Autonomy:  $\geq$  4 h

Power supply: 220 VAC / rechargeable Li-ion battery

Photo/video formats: JPEG / AVI

Storage onto USB / SD

Operational temperature: -28°C to 50°C

Case: ABS, splash-proof



Control Station



Model:  
**KAMI**

## Pipe Inspection System Portable Push-rod Camera

- DN20 to DN50 pipes, 10 m / 20 m / 30 m / 40 m cable
- Compact design: highly adapted to narrow or difficultly accessible areas



**C12B**

### Accessories

1 × DVR remote control, 1 × charger/AC adaptor, 1 × connecting cable, 1 × centralizer, 1 × built-in Li-Ion battery, 1 × notice

### Order codes

Codes	Specifications
CST7M-C12B-CR12-20M	Portable reel, 20 m cable (standard)
CST7M-C12B-CR12-30MC	Portable reel, 30 m cable, meter counting (standard)
CST7M-C12B-CR12-10M	Portable reel, 10 m cable (in option)
CST7M-C12B-CR12-30M	Portable reel, 30 m cable (in option)
CST7M-C12B-CR12-40M	Portable reel, 40 m cable (in option)
CST7M-C12B-CR12-40MC	Portable reel, 40 m cable, meter counting (in option)

### Parameters



**Camera Head  
C12B**

Model: C12B  
 Diameter range of service: DN20 - DN50  
 Dimensions:  $\Phi$  12 × 22 mm  
 Passage of elbows:  $\geq$  35 mm  
 Materials: housing in stainless steel, lens in sapphire crystal  
 Focal length: 5 to 15 cm, fixed  
 Resolution: 0.4 mega-pixel  
 Lighting: 8 LEDs  
 Waterproof: IP68, 1 bar Max.  
 Operational temperature: -20°C to 55°  
 Weight: 45 g



**Cable Reel  
CR12**

Cable material: fibre glass  
 Diameter & length:  $\Phi$  4.8 mm & 10 m / 20 m / 30 m / 40 m  
 Meter counting: in option for 30 m and 40 m cables  
 Power supply: by the control station  
 Protection rating: splash-proof  
 Operational temperature: -28°C to 50°C  
 Dimensions: 32 × 32 × 11 cm



**Control Station  
CST7M**

Screen: 7" TFT, 800 × 480 PX resolution  
 Autonomy:  $\geq$  4 h  
 Power supply: 220 VAC / rechargeable Li-ion battery  
 Photo / video (JPEG / AVI) / audio recording  
 Ports: 1 × USB, 1 × SD, 1 × video input  
 Case: small, ABS, splash-proof  
 Weight & dimensions: 2,5 kg, 27 × 22 × 10 cm

Model:  
**VISIO 360**



**Standard centralizers**



**Camera protection**

### Accessories

- 1 × DVR remote control
- 1 × charger/AC adaptor
- 1 × connecting cable
- 1 × standard centralizer
- 2 × acrylic domes
- 1 × camera protection in steel
- 1 × Li-Ion battery
- 1 × notice

## Pipe Inspection System Push-rod Camera

- Large diameter range from DN70 to DN450; 512 Hz transmitter and built-in meter counting
- Camera head: PAN 360° / TILT 180°, adjustable focal length, 18 strong LEDs
- Multifunction control station: keyboard for text input, Joysticks for camera head rotation, audio / video / photo recording, storage onto USB / SD



### Order codes

Codes	Specifications
MTCST10B-C60T- 60MC (standard)	60 m cable
MTCST10B-C60T- 100MC(in option)	100 m cable

### Parameters



**Camera Head  
C60**

Diameter range & passage of elbows: DN70 -450 & ≥ 100 mm  
 Dimensions & weight: Φ 60 × 120 mm & 344 g  
 Lens: 1/3" Sony CCD sensor, 480 TVL  
 Materials: housing in aluminium, lens in sapphire crystal, dome in acrylic  
 View angle: PAN 360° / TILT 180°  
 Focal length: 10 to 20 cm, adjustable  
 Resolution: 0.5 mega-pixel  
 Lighting: 18 LEDs strong, adjustable  
 Waterproof: IP68, 1 bar Max.  
 Operational temperature: -20°C to 55°



**Cable Reel  
CR36**

Cable material: fibre glass  
 Diameter & length: Φ 9 mm & 60 / 100 m  
 Meter counting and 512 Hz transmitter integrated  
 Power supply: by the control station  
 Protection rating: splash-proof  
 Operational temperature: -28°C to 50°C  
 Dimensions: 77 × 36 × 83 cm



**Control Station  
MTCST10B**

Multifunctions: keyboard for text input, video / photo / audio recording, Joysticks  
 Screen: 10" TFT, 800 × 600 PX resolution  
 Autonomy: ≥ 4 h  
 Power supply: 220 VAC / Li-Ion battery  
 Photo/video formats: JPEG / AVI  
 Ports: 1 × USB, 1 × SD, 3 × video input  
 Case: ABS, splash-proof  
 Weight & dimensions: 5 kg & 33 × 23 × 15 cm

Model:

**OXLUS 10**  
**OXLUS 20**

## Pipe Inspection System Portable Push-rod Camera

- DN50 to DN125 pipes, 20 m / 30 m / 40m cable
- All-in-one design: easy to carry around
- Rich choices of camera heads

C23



C23T



CD23



CD23T



C25



C25T



C26



C26T



OXLUS 10



OXLUS 20

### Accessories

1 × DVR remote control, 1 × charger/AC adaptor, 1 × connecting cable, 1 × centralizer (except for the camera head C25), 1 × camera head protection in EVA, 1 × built-in Li-Ion battery, 1 × notice

### Parameters



OXLUS 10 -  
CST7S

Screen: 7" TFT, resolution 800 × 480 PX

Autonomy: ≥ 4 h

Power supply: 220 VAC / Li-Ion battery

Photo/video formats: JPEG / AVI

Audio recording

Ports: 1 × USB, 1 × SD, 1 × video input

Case: all-in-one, ABS, splash-proof

Weight & dimensions: 7,5 kg, 51 × 43 × 18 cm



OXLUS 20 -  
CST10S

Screen: 10" TFT, resolution 800 × 600 PX

Autonomy: ≥ 4 h

Power supply: 220 VAC / Li-Ion battery

Photo/video formats: JPEG / AVI

Audio recording

Ports: 1 × USB, 1 × SD, 1 × video input, 1 × video output

Case: all-in-one, ABS, splash-proof

Cable material: fibre glass

Diameter & length: Φ 5.2 mm & 20 m / 30 m / 40 m

Meter counting: in option

Power supply: by the control station

Protection rating: splash-proof

Operational temperature: -28°C to 50°C

Dimensions: 32 × 32 × 11 cm



Cable Reel  
CR31

## Parameters - Camera Heads

Model	Φ×L (mm)	Diameter range (mm)	Passage of elbows (mm)	512 Hz transmitter	Self-leveling	Materials	Focal length	Resolution	Lighting
<b>C23</b>	Φ23 × 75	DN50-DN125	≥ 65	No	No	Housing in stainless steel; lens in sapphire crystal	10 - 20 cm, fixed focal length	0.4 MP	12 LEDs
<b>C23T</b>	Φ23 × 75	DN50-DN125	≥ 65	Yes	No			0.4 MP	12 LEDs
<b>CD23</b>	Φ23 × 42	DN50-DN125	≥ 40	No	Yes			0.5 MP	9 strong LEDs
<b>CD23T</b>	Φ23 × 42	DN50-DN125	≥ 40	Yes	Yes			0.5 MP	9 strong LEDs
<b>C25</b>	Φ25 × 27	DN50-DN125	≥ 35	No	No			0.4 MP	12 LEDs
<b>C25T</b>	Φ25 × 62	DN50-DN125	≥ 65	Yes	No			0.4 MP	12 LEDs
<b>C26</b>	Φ26 × 64	DN50-DN125	≥ 65	No	Yes			0.5 M	15 LEDs
<b>C26T</b>	Φ26 × 64	DN50-DN125	≥ 65	Yes	Yes			0.5 M	15 LEDs

## Order codes

### Control Station

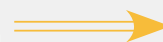
Code	Description
CST7S	Control station OXLUS 10
CST10S	Control station OXLUS 20

### Camera Head

Code	Description
- C23	Φ23 mm camera head
- C23T	Φ23 mm camera head, 512 Hz transmitter
...	
- C26T	Φ26 mm camera head, 512 Hz transmitter, self-leveling function

### Cable Reel

Code	Description
- CR31-20M	Portable reel, 20 m cable
...	
- CR31-40MC	Portable reel, 40 m cable, meter counting



### Standard Products

Codes	Description
CST7S - C23 - CR31-20M	Control station OXLUS 10 + Camera head C23 + Portable reel of 20 m cable
CST10S - C25T - CR31-40MC	Control station OXLUS 20 + Camera head C25T + Portable reel of 40 m cable, meter counting



Model:  
**LUMINO 10**

## Pipe Inspection System Push-rod Camera

- DN70 to DN150 pipes, 60 m cable
- Excellent lighting thanks to 30 LEDs



C40BT

### Accessories

1 x DVR remote control, 1 x charger/AC adaptor, 1 x connecting cable, 1 x centralizer, 1 x built-in Li-Ion battery, 1 x notice

### Order codes

Codes	Specifications
CST10S-C40BT-60MC (standard)	Reel with 60 m cable, meter counting, 512 Hz transmitter

### Parameters



Camera Head  
C40BT

Model: C40BT  
Diameter range of service: DN70 - DN150  
Dimensions:  $\Phi$  40 x 42 mm  
Passage of elbows:  $\geq$  70 mm  
512 Hz transmitter: built-in  
Materials: housing in stainless steel, lens in sapphire crystal  
Focal length: 10 to 20 cm, fixed  
Resolution: 0.5 mega-pixel  
Lighting: 30 LEDs  
Waterproof: IP68, 1 bar Max.  
Operational temperature: -20°C to 55°  
Weight: 154 g



Cable Reel  
CR33

Cable material: fibre glass  
Diameter & length:  $\Phi$  8 mm & 60 m  
Meter counting: built-in  
Power supply: by the control station  
Protection rating: splash-proof  
Operational temperature: -28°C to 50°C  
Weight & dimensions: 14,9 kg, 52 x 28 x 61 cm  
Screen: 10" TFT, 800 x 600 PX resolution



Control Station  
CST10S

Autonomy:  $\geq$  4 h  
Power supply: 220 VAC / Li-Ion battery  
Photo / video (JPEG / AVI) / audio Recording  
Ports: 1 x USB, 1 x SD, 1 x video input, 1 x video output  
Case: standard in ABS, splash-proof  
Weight & dimensions: 2.5 kg, 27 x 22 x 10 cm

Model:  
**RAPIDOS  
10**

## Wireless Manhole HD Camera

- High quality images with a Full HD camera and a HD screen
- Rapid video inspection of a distance up to 80 m
- Multifunctions: video / photo recording, text input, built-in pressure sensor, high precision distance detection by laser, highly suitable for report making



### Introduction

The **RAPIDOS 10** manhole cameras are designed to deliver rapid video inspections and diagnosis of pipes, industrial tanks and vessels. It transmits signals to the controller via wifi. Through a touch screen, users can carry out all operations such as taking photos or videos, inputting texts, editing photos, etc..

## Applications

RAPIDOS 10 are perfectly adapted for the following areas:

- Pipe inspection before cleaning or any other work, or quality check after construction;
- Tanks or vessel inspection;
- Tank-vehicle inspection;
- Boiler diagnosis;
- Inspection of vehicle underside;
- Rescue in disasters
- Archaeological searches
- ...

## Parameters



### Moniteur

Touch screen: 10.1" HD, 1920 x 1080 pixels, 1000 cd/m<sup>2</sup>

Functions: photo & video taking, text input, photo editing, data saving...

System: 8 cores CPU, 4 G cache, 64 G memory (256 G Max.)

Camera: 1/2,8" sensor, resolution 1920 x 1080 pixels; 240x zoom (20x optical, 12x digital), 0 - 90° electric tilt

Lighting: 4 strong adjustable LEDs

Autonomy: ≥ 6 h (3 rechargeable batteries)

10 m wireless distance + 7 m telescopic carbon fibre rod (9 m and 12 m in option), for an inspection distance up to 80 meters



### Camera Head

Built-in software for recording and controlling

Built-in pressure sensor

High precision laser range finder: 0 - 100 m (± 3 mm)

Model:

**VEGA 10  
/20/30/40**

**Custom-Made  
Products**

## Smart Crawler Robotic Inspection Systems

- Highly accessible robotic cameras in terms of budget
- DN150 to DN1000 pipes, 120 m cable by default, other lengths in option
- Easy to operate thanks to a multifunctional control station

VEGA 10



VEGA 20



VEGA 30



VEGA 40

## Applications

The **VEGA 10/20/30/40** series of robotic cameras have been designed to meet a strong demand for robotic cameras easy to operate and accessible in terms of budget.

With a simple and compact structure, the **VEGA 10/20/30/40** can be used in all kinds of zones too dark or inaccessible to push-rod cameras.

The applications include water pipes, petrol pipes, venting pipes, water tanks, electricity set-up, civil engineering, etc...



MTCST10B



CR215



CF360

## Parameters



**VEGA 10**

Service diameter: DN150 - DN1000; waterproof: IP68  
Creeping speed: 6 - 20 m / min, 6 × 6 drive wheels  
2 motors, turns to right and to left  
3 sizes of wheels:  $\Phi$  100 / 150 / 200 mm  
Built-in 512 Hz transmitter, fixed subsidiary lighting  
Dimensions with a camera: 520 × 120 × 130 mm



**VEGA 20**

Service diameter: DN180 - DN1000; waterproof: IP68  
Creeping speed: 6 - 20 m / min, 6 × 6 drive wheels  
2 motors, turns to right and to left  
3 sizes of wheels:  $\Phi$  100 / 150 / 200 mm  
Built-in 512 Hz transmitter, fixed subsidiary lighting  
Dimensions with a camera: 320 × 150 × 130 mm



**VEGA 30**

Service diameter: DN150 - DN1000; waterproof: IP68  
Creeping speed: 6 - 20 m / min, 6 × 6 drive wheels  
1 motor, without function of turns to right or left  
3 sizes of wheels:  $\Phi$  100 / 150 / 200 mm  
Built-in 512 Hz transmitter, removable subsidiary lighting  
Dimensions with a camera: 520 × 120 × 130 mm



**VEGA 40**

Service diameter: DN180 - DN1000; waterproof: IP68  
Creeping speed: 6 - 20 m / min, 6 × 6 drive wheels  
2 motors, turns to right and to left  
3 sizes of wheels:  $\Phi$  100 / 150 / 200 mm  
Built-in 512 Hz transmitter, fixed subsidiary lighting  
Integrated mechanical arm  
Dimensions with a camera: 370 × 150 × 345 mm



**Camera Head  
CF260**

Dimensions: 160 mm × 78 mm  
Materials: housing in aluminium, lens in sapphire crystal  
PAN360° / TILT 180°  
Focus: automatic / manual (20 mm to  $\infty$ )  
Zoom: 12 × optical  
Resolution: 9760H × 504V, 0.5 mega-pixels  
Video: PAL/NTSC  
Lighting: 6 LEDs, adjustable  
Waterproof: IP68, 1 bar Max.  
Operational temperature: -20°C to 55°



**Cable Reel  
CR215**

Cable material: fibre glass  
Diameter & length:  $\Phi$  9 mm &  $\geq$  120 m  
Built-in meter counting  
Power supply: Li-Ion battery or AC  
Protection rating: splash-proof  
Operational temperature: -28°C to 50°C  
Dimensions: 47 × 47 × 51 cm



**Control Station  
MTCST10B**

MultiFunctions: keyboard for text input, audio, screen-shot during video-taking, Joysticks to control the camera and the robot  
Screen: 10" TFT, resolution 800 × 600 pixels  
Autonomy:  $\geq$  4 h  
Power supply: 220 VAC / Li-Ion battery  
Photo/video formats: JPEG / AVI  
Ports: 1 × USB, 1 × SD, 3 × video input  
Case: ABS, splash-proof  
Weight & dimensions: 5 kg, 33 × 33 × 15 cm



Model:

**VEGA  
SUP**

**Custom-Made  
Products**

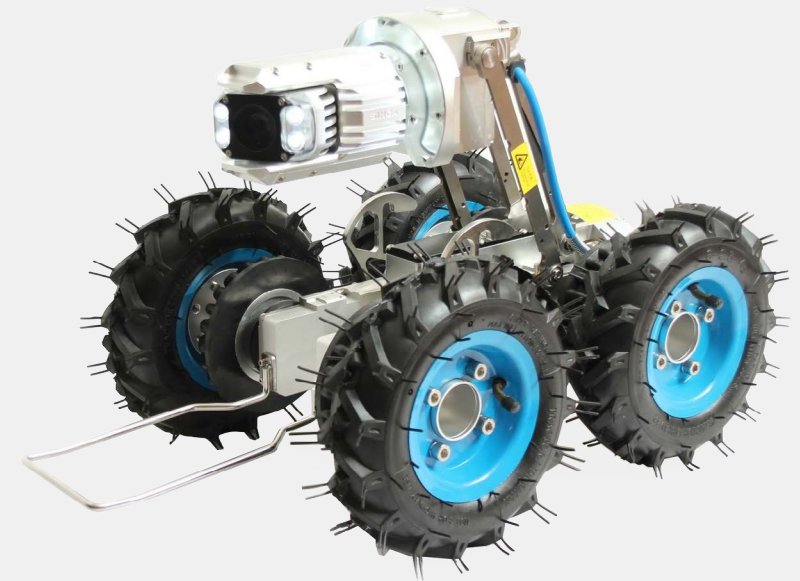
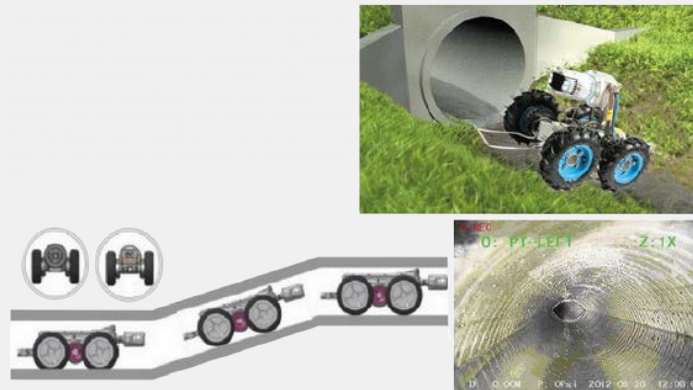
## Smart Crawler Robotic Inspection Systems

- Report software & multifunctions: GPS localisation, slope calculation, video recording, screen-shots, defect grading, text input, etc..
- High quality pictures and excellent lighting: Sony HD lens, rotation 360°/270°, auto-focus, 120 x zoom, strong adjustable LEDs, 14" screen
- Reinforced security: IP68 in a depth of 10 m under water, multi-parameters to detect in direct robot status - atmosphere pressure, robot inclination, 3D position of the robot in pipes, highly sensible sensor against roll-overs, emergency stop

### Applications

The **VEGA SUP** series have been designed specially for video inspections in all kinds of zones too dark or inaccessible for push-rod cameras. They are highly suitable for a large range of applications:

- Water pipes
- Petrol pipes
- Victim rescue in disasters
- Venting pipes
- Water tanks
- Electricity setup
- Civil engineering
- ...



**Cable Reel**



**Control Station**

## Parameters



**Front Camera Head**

Sensor: 1/4 CCD Sony, resolution 530 TVL

Rotation: PAN 360°/TILT 270°

Zoom: 120 × ( 10 × optical, 12 × digital )

Strong LEDs + additional lighting

Protection: IP68



**Back Camera Head**

In option

Sensor: 1/4 CCD Sony, resolution 480 TVL

Strong LEDs

Protection: IP68



**Crawler**

Diameter range of service: DN200 to DN2000

Electric lifting function

Max. output power: 160 W

Climbing capacity: 45°

Creeping speed: 0 - 35 m / min

4 drive wheels

2 sizes of wheels:  $\Phi$  210 /  $\Phi$  130 mm

Double motors for turns to left and to right



**Remote Control**

Wireless control distance: 10 m

Controlled functions: robot (forward, back, left, right, speed and lifting), camera (zoom, rotation, reset, light, switching)

Power supply: built-in Li-Ion battery



**Cable Reel**

Power supply: 48 V CC or CA

Meter counting

Universal wheels with breaking function

Cable: Kevlar, 120 m standard, 220 m max. in option

Control station of industrial level: 15" screen

Memory: 256 G

Language of the report software: English



**Control Station**

Controlled functions: turns to left and right, forward, back, rotation of camera head, light adjusting, lifting, zoom, robot creeping speed

Display: ambient pressure, robot speed, distance, inclination degree, lifting status

Photo and video taking

Wincam software in option

Model:  
**V-KA**

## Vertical Inspection Camera

- Adapted for chimneys or vertical pipes from DN70 to DN450
- Portable reel of 60 m of soft cable
- Multi-functional control station: video / photo / audio recording, keyboard for text input



### Accessories

1 x DVR remote control, 1 x charger/AC adaptor, 1 x video cable, 2 x acrylic dome, 1 x camera protection in steel, 1 x built-in Li-Ion battery, 1 x notice

### Order codes

#### Codes

MTCST10B-C60-CRS-40M  
MTCST10B-C60-CRS-60M

#### Specifications

40 m cable  
60 m cable

### Parameters



Camera Head  
C60

Model: C60  
Diameter range & passage of elbows: DN70 - 450 & ≥ 100 mm  
Dimensions & weight:  $\Phi$  59 × 135 mm, 344 g  
Lens: 1/3" Sony CCD colour, 900 TVL  
Materials: housing in aluminium, lens in sapphire crystal, dome in acrylic  
Focal length: 10 to 20 cm, adjustable  
Resolution: 976 × 496 pixels  
Lighting: 18 strong LEDs, adjustable  
Waterproof: IP68, 1 bar (10 m)  
Operational temperature: -20°C to 55°



Cable Reel  
CRS

Cable: fibre glass, soft  
Diameter & length:  $\Phi$  7 mm & 40 m / 60 m  
Manual winding & unwinding  
Cable breaking function: manual  
Protection rating: splash-proof  
Operational temperature: -28°C to 50°C  
Dimensions (H × l × L): 41 × 25 × 32 cm



Control Station  
MTCST10B

Multifunctions: keyboard for text input, audio, screen-shot during video-taking, Joysticks for controlling the camera head  
Screen: 10" TFT, resolution 800 × 600 PX  
Autonomy: ≥ 4 h  
Power supply: 220 VAC / Li-Ion battery  
Photo/video formats: JPEG / AVI  
Ports: 1 × USB, 1 × SD, 3 × video input  
Case: ABS, splash-proof  
Weight & dimensions: 5 kg, 33 × 33 × 15 cm

Model:

**DIPKA  
Lite**

**Custom-Made  
Products**

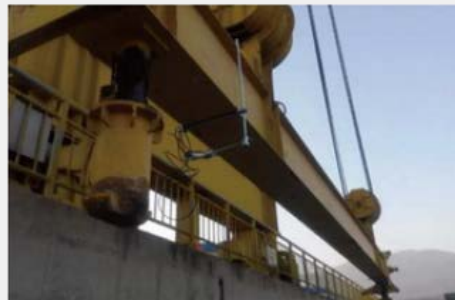
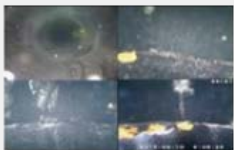
## Well Camera

- Adapted for wells or conduits from DN50 to DN400
- Depth : 0 - 500 m under water
- Large diameter range of applications: drilling, petrol or water wells, rescues, under water farming or supervision



## Applications

The **DIPKA Lite** series have been designed to detect damaged surfaces, cracks, or hollows in deep wells. They are also widely used in underwater farming or supervision. Photos and videos can be saved directly.



## Parameters (to be continued)

### Camera Head

Types



**Pan / Tilt**

Model	PTZ
Dimension	Φ 45 mm x 300 mm
Diameter range	DN50 to DN400
Material	Chromium plated
Pressure	100 bar (1000 m under water)
Operating temperature	-20°C to 50°C
Lighting	9 strong LEDs, adjustable
Lens	1/3" HD CCD colour
View angle	PAN 360° / TILT 180°
Zoom	10 × optical
Focal length	100 to 600 mm, adjustable
Resolution	976 × 582 pixels, 820 TVL

### Packing List

- 1 × camera head PAN 360° / TILT 180°
- 1 × control station, 1 × tripod, 1 × reel, 1 × notice
- 1 × 10-pin connecting cable, 1 × 4-pin connecting cable
- 1 × charger/AC adaptor, 1 × built-in 120 G hard disk



## Parameters



### Control Station

Screen: 10" LCD, brightness 250 cd/m<sup>2</sup>; contrast: 400:1; resolution: 640 × 480 pixels (compatible 1024 × 768)

Recording: photo / video / audio

Keyboard integrated for text input

Joystick to control the camera head

Built-in 160G HD hard disk

Power supply: 110 to 220 VAC / 12 VCC

Service temp.: -20°C to 55°C / humidity: 5 - 95%

Autonomy: ≥ 4 h

Service life: 500 000 h

Case: ABS, 265 × 213 × 42 mm



### Electric Reel

Materials: reel in aluminium, cable in PE

Functions: up, down, speed, stop

Descent speed: 8 m / min. Max.

Power supply: 12 VCC

Cable: Φ 8mm, 6 wires

Cable length: 100 m to 500 m in option

Meter counting: built-in, with an accuracy of ±0.5%

Power: 250 W

Protection rating: IP63

Operational temperature: -28°C to 50°C

Dimensions (H × l × L): 41 × 25 × 32 cm

## Order codes

### Reel

Codes	Description
-EW	Motorised reel
-MW	Manual reel

### Cable length

Codes	Description
-100	100 m cable
-200	200 m cable
-300	300 m cable (standard)
...	
-500	500 m cable

**Ex: DIPKA Lite-EW-500 means a product with a Pan/Tilt camera head, equipped with a motorised reel of 500 m cable.**



**Pan/TILT Camera Head PTZ**

Model:

**DIPKA  
VISIO**

**Custom-Made  
Products**

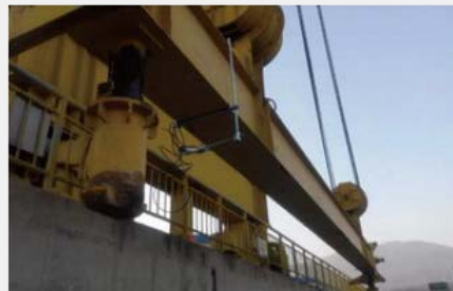
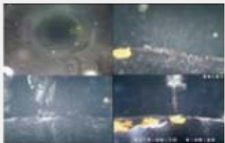
## Well Camera

- Adapted for wells or conduits from DN50 to DN400
- Depth: 0 - 1000 m under water
- Large diameter range of applications: well, petrol or water wells, rescues, under water farming or supervision



## Applications

The **DIPKA VISIO** series have been designed to detect damaged surfaces, cracks, or hollows in deep wells. They are also widely used in underwater farming or supervision. Photos and videos can be saved directly.



## Parameters

### Camera Head

Types



**Pan / Tilt**

Model	PTZ
Dimension	Φ 45 mm x 300 mm
Diameter range	DN50 to DN400
Material	Chromium plated
Pressure	100 bar (1000 m under water)
Operating temperature	-20°C to 50°C
Lighting	9 LEDs strong, adjustable
Lens	1/3" HD CCD colour
View angle	PAN 360° / TILT 180°
Focal length	100 to 600 mm, adjustable
Resolution	976 × 582 pixels, 820 TVL

## Packing List

- 1 × PAN 360° / TILT 180° camera head
- 1 × control station, 1 × tripod, 1 × reel, 1 × notice
- 1 × 10-pin connecting cable, 1 × 4-pin connecting cable
- 1 × charger/AC adaptor, 1 × built-in 120 G hard disk

## Parameters (suite)



### Control Station

Screen: 10" LCD, brightness de 250 cd/m<sup>2</sup>; contrast: 400:1; resolution: 640 × 480 pixels (compatible 1024 × 768)

Recording: photo / video / audio

Keyboard integrated for text input

Joystick to control the camera head

Built-in 160G HD hard disk

Power supply: 110 to 220 VAC / 12 VCC

Service temp.: -20°C to 55°C / humidity: 5 to 95%

Autonomy: ≥ 4 h

Service life: 500 000 h

Case: ABS, 265 × 213 × 42 mm



### Electric Reel

Materials: reel in aluminium, cable in PE

Functions: up, down, speed, stop

Descent speed: 8 m / min. Max.

Power supply: 12 VCC

Cable: Φ 8mm, 6 wires

Cable length: 100 m to 1000 m in option

Power: 250 W

Protection rating: IP63

Operational temperature: -28°C to 50°C

Dimensions (H × l × L): 41 × 25 × 32 cm



### Tripod

Material: stainless steel

Manual operation

Digital meter counting: 0 to 999.99 m with an accuracy of ± 0.01 m

Mechanical meter counting: 0 to 999.99 m, with an accuracy of ± 0.05 m

## Order codes

### Reel

Codes	Description
-EW	Motorised reel
-MW	Manual reel

### Cable length

Codes	Description
-100	100 m cable
-200	200 m cable
-300	300 m cable (standard)
...	
-1000	1000 m cable

Ex: DIPKA VISIO-EW-1000 means a product with a PAN/TILT camera head, equipped with a motorised reel of 1000 m cable.



Tripod



Reel

Model:  
**DIPKA  
SUP**

## Well Camera

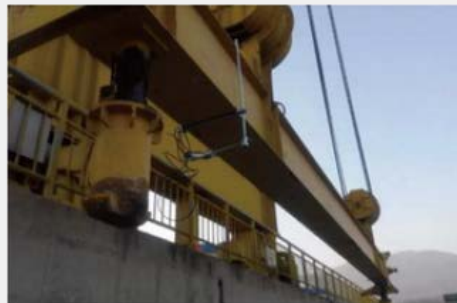
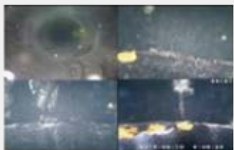
- Adapted for wells or conduits from DN40 to DN400
- Depth: 0 - 2000 m under water
- Large diameter range of applications: well, petrol or water wells, rescues, under water farming or supervision



Custom-Made  
Products



## Applications

The **DIPKA SUP** series have been designed to detect damaged surfaces, cracks, or hollows in deep wells. They are also widely used in underwater rescues or supervision. Photos and videos can be saved directly.



## Parameters

### Camera Head

Types		
	Panoramique	4-picture
Model	PAN	4P
Diameter range	DN40 to DN400	DN100 to DN400
Material	Chromium plated	Chromium plated
Pressure	200 - 300 bar (2000 m under water)	200 bar (1000 m under water)
Operating temperature	-20°C to 60°C	-5°C to 55°C
Lighting	9 strong LEDs	21 strong LEDs
Lens	1/3" HD CCD colour	1/4" HD CCD colour
View angle	TILT 170°	TILT 170°, 120° on the sides
Resolution	795 × 596 pixels, 820 TVL	795 × 596 pixels, 820 TVL
Diameter	Φ 35, Φ 50, Φ 75, Φ 80, Φ 100 mm	Φ 80 mm

## Packing List

- 1 × panoramic or 4-picture camera head
- 1 × control station, 1 × tripod, 1 × reel, 1 × notice
- 1 × 10-pin connecting cable, 1 × 4-pin connecting cable
- 1 × charger/AC adaptor, 1 × built-in 120 G hard disk



## Parameters (continuation)



### Control Station

Screen: 10" LCD, brightness de 250 cd/m<sup>2</sup>; contrast: 400:1; resolution: 640 × 480 pixels (compatible 1024 × 768)

Recording: photo / video / audio

Built-in 160G HD hard disk

Power supply: 110 to 220 VAC / 12 VCC

Service temp.: -20°C to 55°C / humidity: 5 to 95%

Autonomy: > 4 h

Service life: 500 000 h

Dimensions: 265 × 213 × 42 mm

Materials: reel in aluminium, cable in PE

Functions: up, down, speed, stop

Descent speed: 8 m / min. Max.

Power supply: 12 VCC

Cable: Φ 8mm, 6 wires

Cable length: 100 m to 2000 m in option

Power: 250 W

Protection rating: IP63

Operational temperature: -28°C to 50°C

Dimensions (H × l × L): 41 × 25 × 32 cm

Material: stainless steel

Manual operation

Digital meter counting: 0 to 999.99 m With an accuracy of ± 0.01 m



### Tripod

Mechanical meter counting: 0 to 999.99 m

## Order codes

### Camera Head

Codes	Description
-PAN35	Panoramic camera head Φ 35 mm
-PAN50	Panoramic camera head Φ 50 mm
-PAN75	Panoramic camera head Φ 75 mm
-PAN80	Panoramic camera head Φ 80 mm
-PAN100	Panoramic camera head Φ 100 mm
-4P	4-picture camera head, Φ 80 mm

### Reel

Codes	Description
-EW	Motorised reel
-MW	Manual reel

### Cable length \*

Codes	Description
-100	100 m cable
-200	200 m cable
-300	300 m cable (standard)
...	
-2000	2000 m cable

Ex: DIPKA SUP-PAN35-EW-1200 means a product with a panoramic camera head of Φ 35 mm, equipped with a motorised reel of 1200 m cable.

\*: Lengths > 1000 m are compatible only with panoramic camera heads.

Model:  
**R12**  
**T1**

## Pipe Detector & 512 Hz transmitter

- Frequency of 512 Hz
- Detector adapted to detect a camera head or a robot with a built-in 512 Hz transmitter
- High precision thanks to constantly adjustable sensibility



### Detector R12

- Frequency: 512 Hz
- Power supply: 6 × AA
- Current: < 55 mA
- Operation modes: NORM / NOISE
- Sensibility: NEAR / FAR
- Sensibility adjustment: constant
- Output intensity: LCD 15 levels
- Operating temperature: -10°C to 50°C
- Dimensions: 100 × 10 × 10 cm
- Weight: 1 kg

### Transmitter T1

- Frequency: 512 Hz
- Pressure: 5 m under water
- Distance: 8 m in air, 7 m for PVC pipes, 6 m for cast iron pipes
- Power supply: AAA 1.5 V
- Service current: < 120 mA
- Operating temperature: 0°C to 50°C
- Pressure: 0.5 bar
- Connection thread: M15 × 1
- Dimensions:  $\Phi 28 \times 76$  mm
- Weight: 60 g

Model:  
**R13A**  
**T3**

## Pipe Detector & Multi-frequency transmitter

- Multi-frequencies
- Detector adapted to detect a camera head or a robot with a built-in 512 Hz transmitter
- To generate the pipeline drawing automatically thanks to a built-in GPS



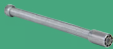


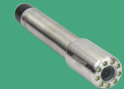



### Detector R13A

- Frequencies: 512, 1 k, 33 k, 83 k Hz
- Screen: 3.5" back-light LCD
- Built-in GPS to generate automatically a pipeline drawing
- Detection distance: 6 m
- Power supply: built-in Li-Ion battery, 7.4 V

### Transmitter T3






- Frequencies: 128, 512, 1 k, 2 k, 8 k, 33 k, 65 k, 83 k Hz
- Screen: back-light LCD
- Large band: 10 W
- Power supply: built-in Li-Ion battery, 14.8 V

## Appendix 1: Spare parts - Camera heads for push-rod cameras (to be continued)

Models		C12B	C23	C23T	CD23	CD23T	C25	C25T
								
Applications	Diameter range	DN20 to DN50	DN50 to DN125	DN50 to DN125	DN50 to DN125	DN50 to DN125	DN50 to DN125	DN50 to DN125
	Passage of elbows	≥ 35 mm	≥ 65 mm		≥ 40 mm		≥ 35 mm	≥ 65 mm
	Compatible models	KAMI	OXLUS, ELEGAM					
General Parameters	Dimensions (Φ × L)	Φ 12 × 22 mm	Φ 23 × 75 mm		Φ 23 × 42 mm		Φ 25 × 27 mm	Φ 25 × 62 mm
	Weight	45 g	65 g	120 g	120 g	210 g	85 g	122 g
	Materials	Housing in stainless steel + lens in sapphire crystal						
	Water-proof	IP68 to 1 bar Max.						
	Operational temperature	-20 °C to 55 °C						
Technical Parameters	Self-leveling	×			•		×	
	Focal length	5 - 15 cm, fixed Focal length	10 - 20 cm, fixed Focal length					
	Zoom	×						
	Tilt	×						
	Rotation angle	×						
	Lighting	8 LEDs	12 LEDs		9 LEDs (strong)		12 LEDs	
	Resolution (mega-pixel)	0.4 MP			0.5 MP		0.4 MP	
	512 Hz transmitter	×		•	×	•	×	•

Note: × Without    • With    ◦ In option

## Appendix 1: Spare parts - Camera heads for push-rod cameras

Models							
<b>Applications</b>	Diameter range	DN50 to DN125		DN70 to DN150		DN70 to DN450	
	Passage of elbows 90°	≥ 65 mm		≥ 70 mm	≥ 100 mm		
	Compatible models	ELEGAM, OXLUS		LUMINO	VISIO 360	VISIO 360. V-KA	
<b>General Parameters</b>	Dimensions (Φ × L)	Φ 26 × 64 mm	Φ 26 × 64 mm	Φ 40 × 42 mm	Φ 50 × 95 mm	Φ 60 × 120 mm	
	Weight	135 g	182 g	154 g	334 g	344 g	
	Materials	Housing in stainless steel + lens in sapphire crystal				Housing in aluminium + lens in sapphire crystal + dome in acrylic	
	Water-proof	IP68 to 1 bar Max.					
	Operational temperature	-20 °C to 55 °C					
<b>Technical parameters</b>	Self-leveling	•					
	Focal length	10 - 20 cm, fixed focal length			Auto-focus	10 - 20 cm, adjustable	
	Zoom	x			12 × optical	x	
	Tilt	x					
	Rotation angle	x					
	Lighting	15 LEDs	15 LEDs	30 LEDs	22 LEDs (strong)	18 LEDs (strong)	
	Resolution (mega-pixel)	0.5 MP					
	512 Hz transmitter	x		•	x	x	

Note: x Without • With ○ In option



# VIDEO INSPECTION SYSTEMS - PIPES & WELLS

## Where to buy?

You can find our products in our e-shop: [www.forbesteurope.eu](http://www.forbesteurope.eu), or you can as well send us your demands by email or by telephone.

## Contact

Email: [info@forbest-online.com](mailto:info@forbest-online.com)

Tel.: + 33 (0)7 83 93 80 43 (English or French),  
+ 49 (0) 721 9649 6810 (English or German)

## Hours

9 h to 17 h, from Monday to Friday, except national holidays.

## Shipping within 48 h

We guarantee a delivery within 2 work days upon receiving payments for all our standard push-rod cameras.

## Rapid & Humane After-Sales Services

FORBEST (Europe) as well as our distributors in Europe take care of maintenance or repairs of your products. Thanks to our technician team, your cameras can be maintained or repaired in a very short delay in order to spare your precious time.



FORBEST Europe GmbH  
Bannwaldallee 46, 76185 Karlsruhe, Germany  
Tel.: + 49 (0) 721 9649 6810  
Email: [info@forbest-online.com](mailto:info@forbest-online.com) Site: [www.forbest-online.com](http://www.forbest-online.com)